

## RUNNING COST INSTRUCTION



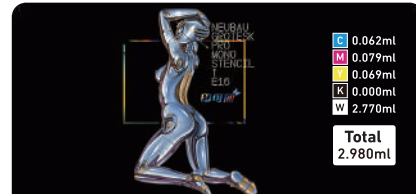
C	0.127ml
M	0.041ml
Y	0.022ml
K	0.000ml
W	1.430ml
Total	
1.620ml	

SIZE: 21x23(cm)



C	0.032ml
M	0.047ml
Y	0.040ml
K	0.000ml
W	1.840ml
Total	
1.959ml	

SIZE: 21x28(cm)




C	0.062ml
M	0.079ml
Y	0.069ml
K	0.000ml
W	2.770ml
Total	
2.980ml	

SIZE: 21x28(cm)



C	0.078ml
M	0.156ml
Y	0.053ml
K	0.000ml
W	3.980ml
总计:	
4.267ml	

SIZE: 21x28(cm)



C	0.208ml
M	0.178ml
Y	0.334ml
K	0.000ml
W	4.060ml
总计:	
4.780ml	

SIZE: 21x33(cm)



C	0.093ml
M	0.156ml
Y	0.145ml
K	0.000ml
W	1.720ml
总计:	
2.114ml	

SIZE: 21x35(cm)

## SOME OF OUR CLIENTS



DIGITAL GARMENT  
PRINTING SPECIALIST



**DIRECT TO  
GARMENT  
PRINTER**

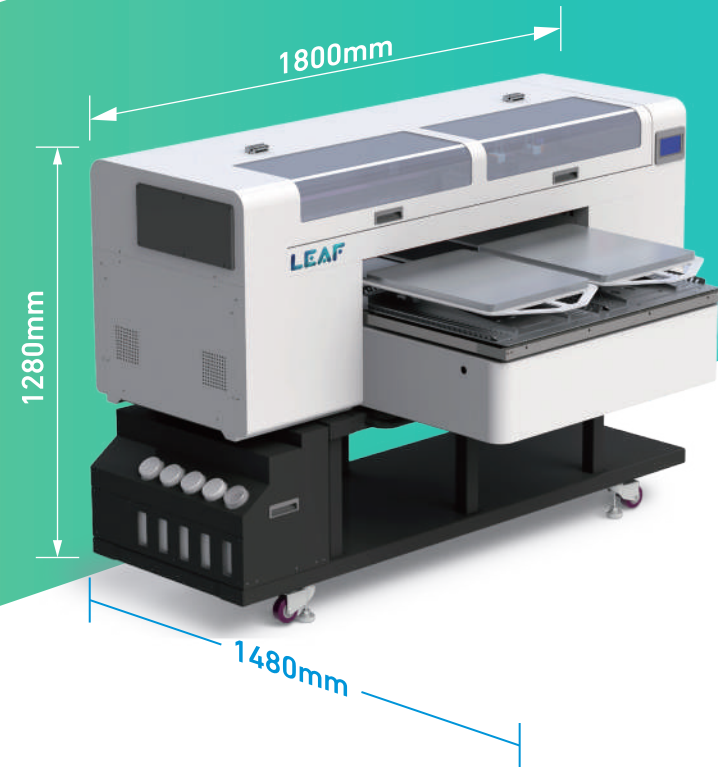
### Bright Leaf international Group

Website: [www.leaf-cn.com](http://www.leaf-cn.com) [www.leafturkey.com](http://www.leafturkey.com) [www.leafitalia.it](http://www.leafitalia.it)  
 E-mail: [business@leaf-cn.com](mailto:business@leaf-cn.com)  
 Group HQ.: The 1st Floor of R&D Bd. No.3 Guangpu West Rd., Huangpu Zone, Guangzhou city, Guangdong Province PRC.  
 All rights reserved 2024.





# AP-1924



### Product Characteristics:

- Adopts industrial Starfire print heads
- Print height of nozzle 6-8mm
- Built-in recirculation prevents white ink deposit.
- Cleanable and changeable head parts reduce the maintenance cost

- Compact design: Length is 1.8 meter and weight is only 202kgs, for easy transportation,
- Self-developed specific pigment ink solution extremely reduces the running cost.
- Advanced technology ensures no impression on garment and soft touch. Printing pattern is even, soft and breathable.

Model	LF-1924
Printhead	Starfire Drop On Demand Industrial Piezo Head
Head Qty	3 print heads (Standard configuration)
Colors	CMYK+W
Printing Area	2x380*500 platens
Resolutions	1200*1200DPI
Ink Type	Water Base Pigment Garment Ink
Color Fastness	TUV Color Fastness American Standard Level 4
Power	Single phase 220V, Voltage Regulator: 2500W
Environment	Temperature: 15°C-32°C, Humidity: 55%-85%
Speed	70pcs/h (Dark T, 1200*1200DPI, 11"*11"Printing size)
	54pcs/h (Dark T, 1200*1200DPI, 34.6*40.8 Printing size)
Installed Size	L*W*H: 1855*1490*1300(mm), Printer base can be seperated for transportation
N.W.	202kgs (including platens, not including base)

## PLATEN STANDARD

### AP-1924

- 1PC\*Large Platen: 600\*800mm
- 2PCS\*Middle Platen: 380\*500mm (Standard configuration)
- 4PCS\*Small Platen: 250\*380mm



### WORK FLOW

Dry Printing

Spraying

Drying

Printing

Drying

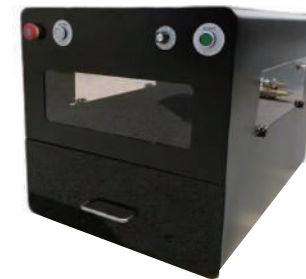
Finishing



DC+80E-3 Tunnel dryer



Open type SPRAY MACHINE



Box type SPRAY MACHINE



Specification for Heat press Model C3

Model	DC+80E-3
Electrical Supply	22KW,3phase,220-240V,or 380-415,50/60HZ
Belt Speed	50 secs > 10mins
Time From Ambient Temp To 160°C	Approx 30 mins
Exhaust Diameter	200mm(8")
Belt Width	80cm(32")
Infeed/Outfeed	88.5cm(35")
Oven Length	260cm(102")
Overall Dimensions	435cm(171")L*115cm(45")W*127cm(50")H

Model	U1 PRO
Spray Area	60*80mm
Spray model	2 commutative nozzles with pretreatment liquid for either light /dark T
Installed Size	1275*350*500mm
G.W.	40kg

Large volume

large size

Separate spray room

Model	U3
Spray Area	41*54mm
Spray model	1 pcs stainless steel nozzle
Installed Size	900*600*620mm
G.W.	55kg

Small size

Small batch

Small venue

Specification	Pneumatic slide up type
Platen size	40*50cm
Temperature range	0-300°C
Voltage	220V
Time range	0-999 s
Power	9 KW
Weight	145 kgs
Packing Dimension	133*98*88 cm
Installed Dimension	124*76*130 cm